

ESBC CHURCH PROFILE



 EARLE
STREET
BAPTIST CHURCH



4	<u>Our Mission</u>
5	<u>Who we Are</u>
7	<u>Our History</u>
10	<u>Meet Our Team</u>
12	<u>Our Structure</u>
13	<u>Life of the Church</u>
15	<u>Our Missions and Mission Partners</u>
16	<u>Our Campus</u>
18	<u>Greenville, SC</u>
20	<u>Our Next Pastor</u>
22	<u>Pastor Search Committee</u>

Table of
CONTENTS



the **GREATER** way



love GOD • love NEIGHBOR • make DISCIPLES
Matthew 22:36-40; 28:19-20

Our MISSION

The mission of the church is to worship God (worship), to share the gospel of Jesus Christ in word and deed (missions), to be a home to all who would enter (fellowship), to minister to the needs of one another (ministry), and to assist in spiritual growth (spiritual growth).

Earle Street's mission centers around worship, missions, fellowship, ministry, and spiritual growth. These five areas inform our church's structure, our activities, and our decisions. This mission serves as our foundational "why" before every "what" and every "how."

As disciples of Jesus Christ, Earle Street members aspire to live what we call the "greater way." The "greater way" is a way of life modeled after Jesus Himself and based on His two great commandments (love God and love neighbors) and His great commission (make disciples). In 2019, we made a church-wide commitment to be "greater way people." ([See our Greater Way Covenant](#))

During our current liminal season, Earle Street has been in a period of reflection and discernment. As a result, we adopted a new [relational covenant](#) in 2025, committing to relate to one another in humility, gratitude, and love. With this covenant we agree to:

- Love and honor one another, serve the Lord, be joyful, share one another's burdens and joy
- Work toward reconciliation
- Let go of anger, build others up, follow the Spirit, be kind and forgiving
- Cultivate the humble mind of Christ
- Live by the golden rule

"A home to all who would enter."

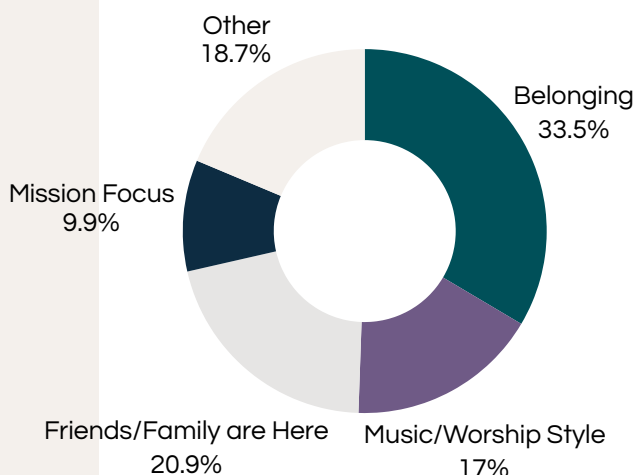
WE ARE

Let Us Introduce Ourselves

Earle Street Baptist Church is historic and traditional, yet vibrant and creative. On a scale of purity to freedom, we lean into freedom. We are not all alike, but there is unity in our diversity. Our unity centers around our commitment to Jesus Christ as Lord and our commitment to our mission. We worship traditionally, with reverence and relevance. We go willingly and give generously. We fellowship joyfully. We minister faithfully. We grow closer to God and each other through intentional Bible study and a steadfast devotion to prayer. Most of all, we love God and each other.

We gather on Sundays, Wednesdays, and often on other days of the week to worship and fellowship at the edge of downtown Greenville. But the church is not a place. We are just as much the church (if not more) beyond the walls as we are inside the walls. As rich as our heritage is, and as much as we respect and cherish it, we believe our best days as a church are ahead of us, not behind us.

“When I moved to the neighborhood, a new neighbor (who went to another church) said, ‘Oh, Earle Street - that’s the church where you can be the president of a corporation or someone off the street. They treat you just the same.’”



When prompted, “Give us three reasons why you’ve stayed at Earle Street,” 95 people responded with 196 answers. “I belong here” includes comments like:

- “It’s home”,
- “It feels like family”,
- “We are connected”,
- “Caring/loving”,
- “Good people”.

WE ARE *Also*

By the Numbers

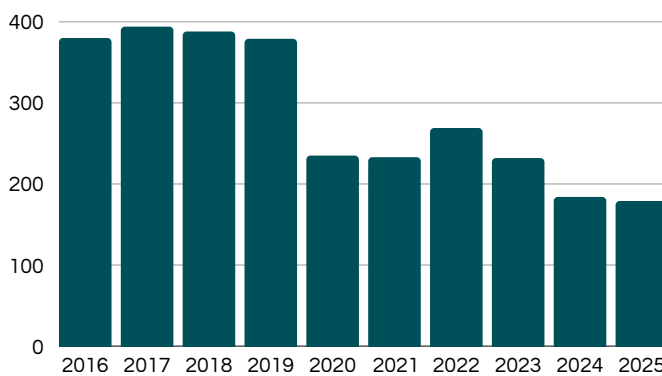
Although our membership numbers have remained fairly steady at close to 1000 members over the past ten years, those numbers may be a bit misleading. We currently have approximately 250 active members and our average worship attendance is 179.

Our in-person worship attendance has experienced decline since Covid-19, the retirement of our long-term Senior Pastor in 2023, and the resignation of both our Preschool and Children’s Minister and our Connections Minister later that same year.

We are blessed with a congregation of committed, hopeful members who love their church and believe deeply in its future. We show up — for Sunday worship, for service projects, for one another — with a readiness to work and a willingness to give. We are a people who have built something lasting together and are eager to see what comes next. We are praying, preparing, and ready to welcome the pastor God has for us.

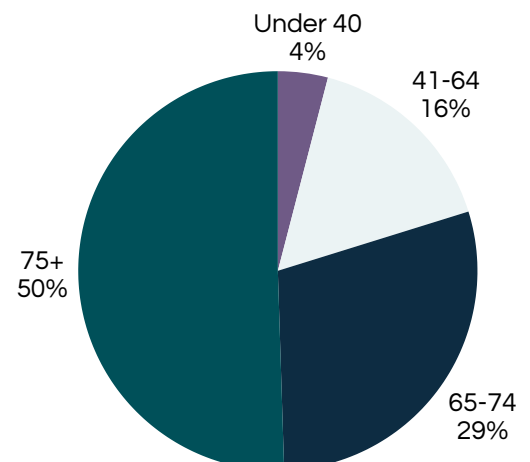
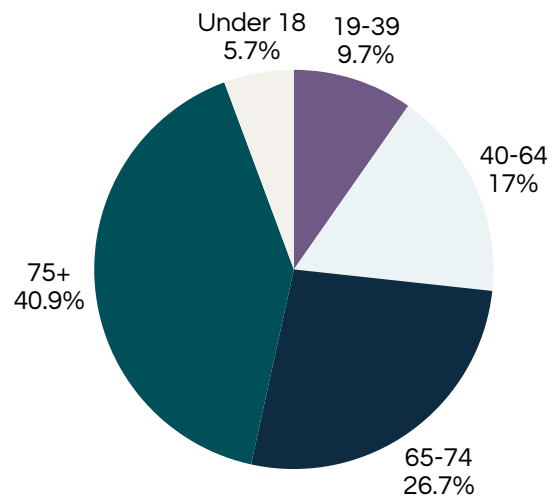
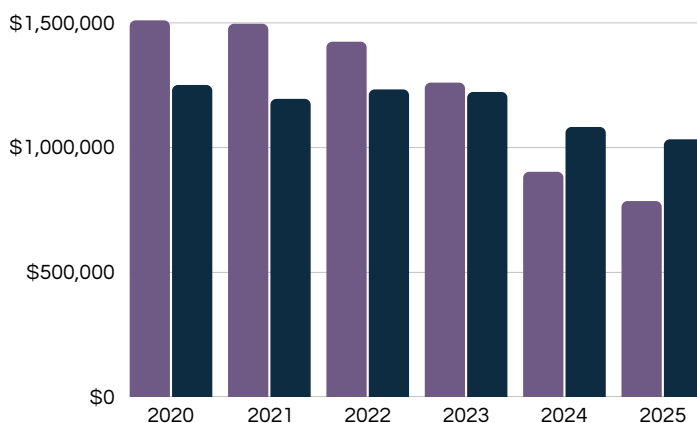
Between saving during years of abundance, having a healthy endowment, and the blessing of estate gifts, we are able to maintain through the lean years and remain debt-free.

AVERAGE ATTENDANCE



● Receipts ● Expenditures

BUDGET DATA



Our HISTORY

**Earle St. Baptist Church
Organized Yesterday; Big
Crowd Attended Services**

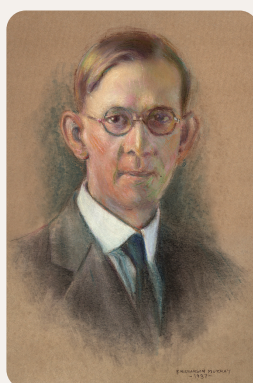
Chose the Rev. J. Furman Moore Pastor and J. C. Keys Superintendent of Sunday School--New Church Has 117 Members--Sermon by Dr. W. T. Derieux--Dr. T. M. Bailey Presided at Meeting

The history of the Earle Street area dates back to the late eighteenth century when Elias Earle settled in Greenville. Not until the early 1900s did the Earle Street neighborhood experience dramatic growth. This growth prompted the need for a place to worship, and the idea for Earle Street Baptist Church was brought to life.

J.A. Brown, pastor of Central Baptist Church, saw the need for a new church in the northeast sector of the city. J.C. Keys, a Greenville businessman and church leader at Central, hosted a meeting in his home for any who were interested. By the first Sunday of October 1921, Sunday afternoon services were held in a home across from our property. Earle Street Baptist Church was organized on March 12, 1922. Charter members numbered 117 with 84 of them coming from Central.

A week later Earle Street established its Sunday School selecting J.C. Keys as Superintendent, a position he had held at Central. Attendance grew to overflowing quickly and the South Carolina Baptist Convention loaned a revival tent for use by the church until October 1922.

On July 25, 1922, the church broke ground for its sanctuary at the corner of Earle Street and Robinson. The first worship service was held in the sanctuary on November 4, 1923, where we still worship today a century later.



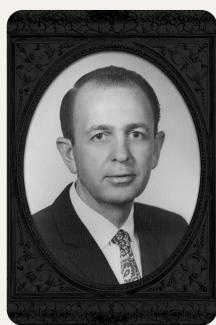
J.C. Keys



Our HISTORY



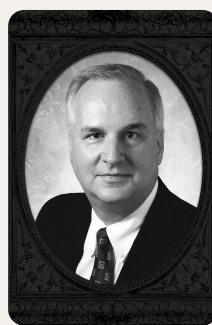
Our early pastors from 1922-1965 served an average of five years and left when called to other churches. Since then, Earle Street has been blessed with three pastors who served for roughly 20 years each.



Rev. W. Harold Killian

1966-1986

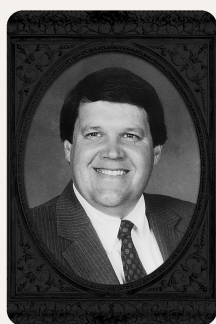
Harold Killian offered calm, steady leadership and a warm and compassionate spirit, facing public school integration and declining church membership.



Dr. Stephen F. Clyborne

2009-2023

Stephen Clyborne was Earle Street's associate pastor for seven years before being called as senior pastor in 2009. He was raised and baptized at Central Baptist where he was also ordained. With declining attendance from Greenville's spread to the suburbs, Central's remaining congregation moved to Earle Street in March 2002. Stephen led the church into a time of revitalization while the city worked to overcome its decline. Stephen retired in 2023.



Dr. James G. Wooten

1987-2008

James G. Wooten infused new energy into a congregation that was open to new people and new ideas, and to sharing leadership responsibilities. Wooten led the church to significant growth in membership and expansion of its missions and ministries.



Our HISTORY

Women have always played a vital role at Earle Street. Helen Gibson, a charter member, was Sunday School Superintendent, church secretary and principal of Vacation Bible School. Kiddie Crisp, also a charter member, was a much-loved elementary school teacher. She taught generations of students in public school, Sunday School and Vacation Bible School. Shortly after Earle Street bought the Stone Avenue school building, it was renamed the Kiddie Crisp Building. In the 1980s, Earle Street elected Jean Cochran, Wilma Brown and Jenny Merck as its first female deacons.

Janice Hinnant, Minister of Music and Worship, was the first woman ordained to the ministry by Earle Street. She has faithfully served the Lord here since 1995.

Lucy Wilkinson serves as Minister of Youth and Recreation. She has served since 2003.



Kiddie Crisp



Helen Gibson



Jean Cochran



Rev. Janice Hinnant



Lucy Wilkinson

Meet

OUR TEAM



Gary Strickland
Interim Senior Pastor

Gary served as the senior pastor of First Baptist Church of Mauldin from 1991 to 2007. He served as Professor of Pastoral Care at Sioux Falls Seminary in South Dakota from 2007 to 2020. He has extensive experience in interim ministry. A native of Georgia, Gary and his wife, Stephanie, recently moved back to the upstate of South Carolina. They have three adult children and seven grandchildren.



Janice Hinnant
Minister of Music and Worship

Janice grew up in the mountains of North Carolina before going to Furman University where she earned a Bachelor's degree in church music. She then earned a Master's degree from Southwestern Theological Seminary in Fort Worth, Texas. Janice has served churches in Texas, Tennessee, Kentucky, and Maryland before joining the staff at Earle Street in 1995. In addition to music, she enjoys reading, running, singing with Greenville Chorale, and being a mom to humans and dogs. She has one adult son.



Lucy Wilkinson
Minister of Youth and Recreation

Lucy grew up in Greenville and went to Clemson University where she was on the Rowing Team. Lucy loves being outside, going on adventures and trying to keep up with her three boys. At Earle Street, she is the leader for the young leaders (youth) and future athletes (recreation).

Wheat

OUR TEAM



Ellen Heyward
Office and Facilities Manager

Ellen has called Greenville home for her entire life. Her hobbies include traveling, reading, and spending time with family and friends. She also owns a small handcrafted leather goods business. She joined the Earle Street staff in June of 2013.



Ministry Assistant for Finance
Gina Conn

Gina grew up in Michigan, moved to the Greenville area in 2019. She enjoys getting to know the area and its beautiful features. Gina has 3 children. Her hobbies include singing, playing the piano, traveling, reading, and walking. She joined the Earle Street staff in July of 2020 as the Ministry Assistant for Finance.

Deacons

Our deacons are servant leaders, responsible for ensuring that the church carries out each component of our mission.

Each year we elect six deacons to serve a three year term, giving us eighteen deacons. Three deacons, one from each class, are assigned to a cluster (see next page), to provide assistance and oversight as needed. In addition, deacons support the ministers and church through prayer, assistance with pastoral ministry, and participation in worship. The deacons administer our endowments and estate accounts and ensure that the church is operating in compliance with our Constitution and Bylaws.

In February, each cluster nominates a representative for the Committee on Deacon Nominations (CDN), which is elected by the church. The CDN then solicits nominations for deacon service and presents a slate of nominees for election in July. Men and women are both eligible to serve in the deacon role. The chairperson of the deacons serves as the Moderator when the church meets in conference quarterly and leads the conference following Robert's Rules of Order.

Our STRUCTURE

Our church organization is structured around the five dimensions of our mission. Everything we do fits into, or is “clustered around”, worship, missions, fellowship, ministry, spiritual growth or the enabling cluster of administration.



Clusters organize the entities of the church to promote communication and coordination, to prevent overlap or conflict in goals or activities, and to ensure that no part of the church mission is overlooked. Each cluster is led by a staff member liaison and three active deacons. This structure is fluid, changing as needed to carry out the mission of the church. Addition, change, or deletion of entities, and changes to the written description of each entity’s responsibilities are approved by the full group of active deacons.

Entities include committees, teams, organizations, and councils. Each entity has one member identified to represent the entity on the cluster.

LIFE OF THE Church

CHILDREN

The Preschool and Children's Ministry of Earle Street Baptist Church exists to help children develop spiritually, mentally, emotionally and socially into all that God created them to be. The church joins the parents to provide foundational Bible learning upon which a commitment to Christ can be made.

We fulfill this ministry by building relationships with the children and their families and offering sound biblical teaching in every aspect of our programming. Sunday School, Children's Worship and Wednesday Night Activities are offered on a weekly basis. Camps, Vacation Bible School, and special events round out the many fun and interactive opportunities we offer to the children of our church.



YOUTH

Youth have an incredible opportunity to get involved here at Earle Street. Our youth ministry is designed to provide a comfortable and inviting place for teens to socialize, learn, and have fun, all while growing deeper in their walk with God.



Youth Special Events

- Summer Camp (Look-Up Lodge)
- Bronx Mission Trip (11th/12th graders, college students and adults)
- International Mission Trips (Ecuador and Thailand)
- Gather and Praise (Choir Conference)
- Fall Retreat (Awanita Valley)
- Wildfire (Silent Auctions Fundraiser Event)
- Summer Fun Days (Bowling, Pool Parties, Ice Skating, Trampoline Park, Water Park, Tubing, etc.)
- Community Mission Days
- Passion Worship Conference

"This church makes me feel like home." Hadley (8)

LIFE OF THE Church

ADULTS

Adults have many opportunities at Earle Street to get involved in discipleship, fellowship, and ministry.

- Adult Sunday School Classes
- Midweek Discipleship Groups
- Family Camping Trips (Fall and Spring)
- Support Groups
 - Divorce Recovery Support Group
- Senior Adult Ministry
 - Senior Adult Sunday
 - XYZ (eXtra Years of Zest monthly meeting and meal)
 - Annual Seniors Retreat
- Prayer Ministry
 - Prayer Team
 - Prayer Breakfast



MUSIC

Earle Street Baptist Church has a music ministry involving people of all ages. The music ministry seeks to help people discover and develop their talents, and then use those talents to glorify God.

- Preschool Choir
- Young Musician's Choir
- Youth Choir
- Youth Handbells
- Sanctuary Choir
- Senior Adult Choir
- Earle Street Ringers (Adult Handbell Choir)

Other Opportunities and Events

- Sanctuary Choir Christmas music
- 5th Sunday Night Singing on a Wednesday Night
- Sacred Music Concert
- The Preschool and Children's Choirs present a music program at Christmas and in the spring.
- The Youth Choir attends Gather and Praise, a youth choir festival in Hilton Head every March.
- The Youth Choir and Youth Handbell Choirs provide the music for Youth Sunday and our Hanging of the Green services.
- Senior Adult Choir provides the music for Senior Adult Sunday.

Our

MISSIONS AND MISSION PARTNERS

Currently, 10% of all undesignated offerings are channeled through what we call "Cooperative Missions." Anyone giving to ESBC can choose to designate that portion of their offering to the ESBC Greater Way Partnership Fund, the Baptist World Alliance, the Cooperative Baptist Fellowship, and/or the Southern Baptist Convention Cooperative Program.

Most choose the ESBC Greater Way Partnership Fund which is used for additional funding for current mission partners, missions emergencies or spontaneous missions needs that arise, or new missions opportunities. In total, our church gives well over a tithe of all undesignated offerings to support the work of Christ both near and far.

In addition to our financial support of missions, we offer mission trips, experiences, and projects for Local and Global Missions.

LOCAL MISSIONS PARTNERS



GLOBAL MISSIONS PARTNERS

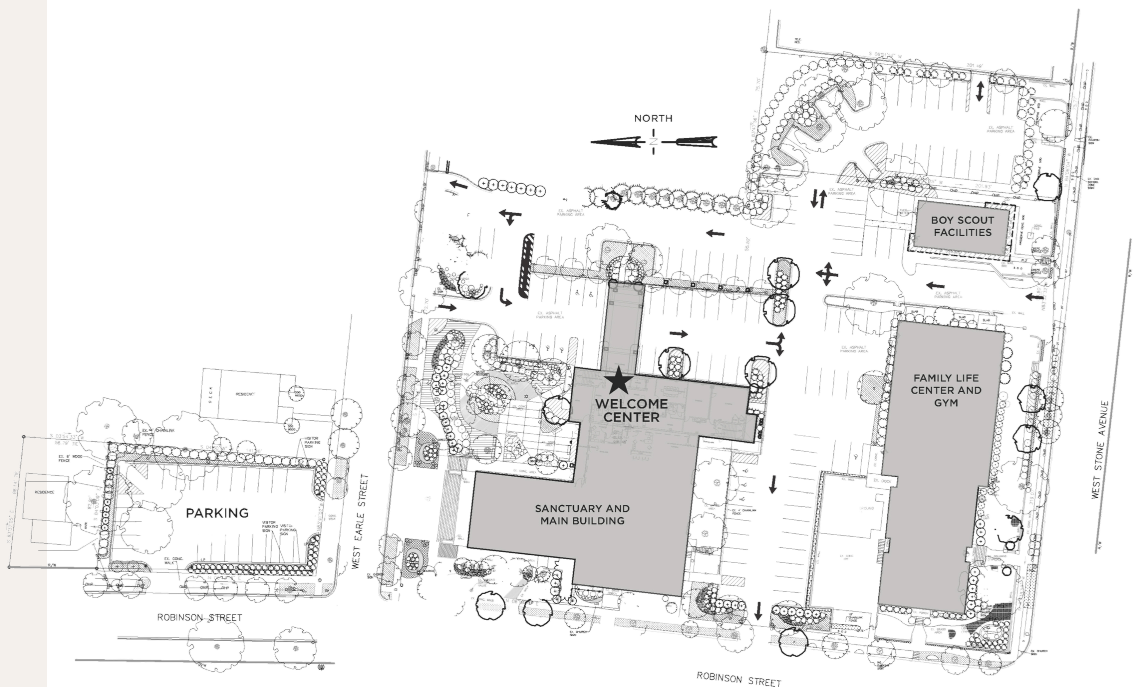




THE PROPERTY

Earle Street Baptist Church sits at the corner of Earle Street and Robinson Street in the Colonel Elias Earle Historic District, on the edge of Greenville's vibrant downtown. The neighborhood blends historic homes, renovated houses, and new construction — and on any nice day, the sidewalks fill with strollers, dog-walkers, runners, and cyclists.

The property was purchased in 1922 when Central Baptist planted our church. Today the campus includes our Sanctuary, two adjoining education buildings, the Family Life Center (gym and Kiddie Crisp Building), and the Scout Building — with one side facing the Earle Street neighborhood and the other facing bustling Stone Avenue.



EARLY BUILDINGS (1922–2000)

Construction began in 1922, with the first Sanctuary service held in November 1923. The original building also included offices, a baptismal pool, and Sunday School classrooms.

In 1947, the church acquired a small building behind the Sanctuary — the original Stone Avenue School, likely the oldest surviving school building in the city. Affectionately called the Kiddie Crisp Building in honor of longtime first-grade teacher Mrs. B.B. Crisp, it now serves as our youth ministry home.

A 3-floor education building was added in 1951, providing classrooms, office space, a choir room, an elevator, and restrooms. Later renovations created the Fellowship Hall and a commercial kitchen below the Sanctuary.

In the early 1990s, leadership envisioned a gym to attract younger generations. Completed in 1995 and adjoined to the Kiddie Crisp Building, the gym supports basketball, volleyball, and pickleball and doubles as an event space. The Scout Building — a former office building acquired around the same time — houses a local Boy Scout troop and provides additional classroom space.

NEW EDUCATION BUILDING (2018)

As the congregation grew in the 2010s, the church evaluated several options before deciding to build on the current campus. The new 3-story, 14,255-square-foot building was dedicated in summer 2018, adding adult and children's classrooms, large restrooms on all three floors, a covered drive-thru, staff offices, updated parking, and a high-capacity elevator.

The project cost \$4.5 million, funded through cash on hand and a capital campaign. Though \$1.5 million in financing was secured, it was never needed — the congregation paid in full, leaving the church debt-free.



SANCTUARY RENEWAL (2021)

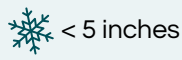
With the church's Centennial Celebration approaching in March 2022, leadership launched a "Sanctuary Renewal" project in early 2021. Over six months — while the congregation worshipped in the Fellowship Hall — the Sanctuary was transformed: plaster ceilings were repaired and encapsulated, the choir loft was expanded, the piano and organ were relocated, pews and altar furniture were refinished, and new flooring, chandeliers, and a live-streaming A/V system were installed. The pipe organ was fully disassembled, cleaned, and reassembled.

The Sanctuary was re-dedicated in November 2021, coming in just under the \$800,000 estimate — paid in full, once again with no debt. [Click here to see the full church blueprint.](#)



GREENVILLE

South Carolina



Located approximately halfway between Charlotte, NC and Atlanta, GA, Greenville is nestled at the foothills of the Blue Ridge Mountains in an area known as the Upstate. Livability recently ranked Greenville #38 on its 2026 Top 100 Best Places to Live, citing its strong job market, affordable housing, dynamic arts and culinary scene, subtropical climate, and abundant outdoor activities.

Once a textile powerhouse, Greenville's economy now centers on manufacturing, healthcare, and professional services. Major employers include GE, Duke Energy, Michelin, Bon Secours Mercy Health System, and Prisma Health System.

[Greenville County Schools](#) ranks among South Carolina's top 10 districts, offering dual-credit and AP courses, gifted and talented programs, special education, five career centers, and a fine arts center — alongside a strong network of private and religiously affiliated schools. Higher education options include [Furman University](#), [Greenville Technical College](#), and the [University of South Carolina School of Medicine Greenville](#).



www.visitgreenville.com

ARTS & CULTURE

Downtown Greenville is friendly, inviting, and full of things to see and do. [The Peace Center](#) hosts world-class Broadway tours, symphony, jazz, dance, and comedy. [The Greenville Theatre](#) and [South Carolina Children's Theatre](#) offer live theatrical productions, while the [Greenville Symphony](#) and [Greenville Chorale](#) celebrate choral and orchestral arts. The [Bon Secours Wellness Arena](#) draws major artists, sporting events, and family shows. Museums include the [Upcountry History Museum](#), the [Greenville County Museum of Art](#), the [Bob Jones University Museum and Gallery](#), and the [Children's Museum of the Upstate](#) — 80,000 square feet of play-based learning.



FOOD & SHOPPING

Named one of "[The Best Food Cities in the U.S.](#)" by Travel+Leisure in 2025, Greenville's culinary scene spans international cuisine from more than 30 countries across five continents. Popular food festivals include [euphoria](#) and [Fall for Greenville](#). Shoppers will find specialty boutiques throughout downtown alongside major retailers at Haywood Mall and The Shops at Greenridge.

GREENVILLE *South Carolina*



PARKS & SPORTS

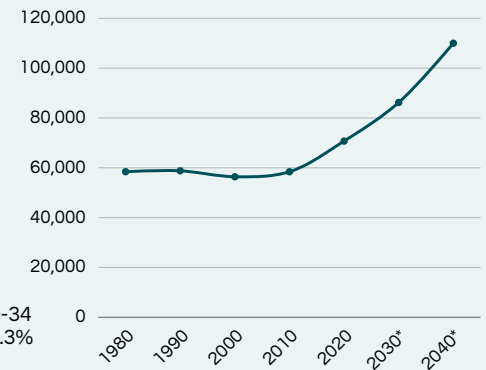
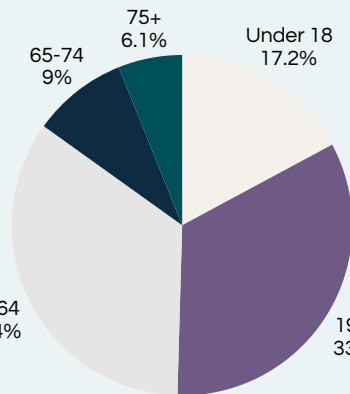
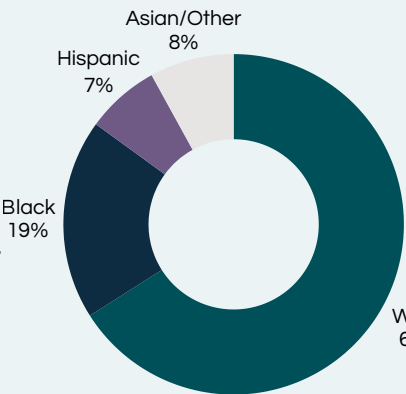
Greenville maintains 38 parks, with [Falls Park on the Reedy](#) — home to the iconic Liberty Bridge — among the most beloved. The [Swamp Rabbit Trail](#) offers 28 miles of paved path for running, walking, and biking, and [Paris Mountain State Park](#) is just ten minutes from downtown with hiking, boating, swimming, and camping. Sports fans can catch the [Greenville Drive](#) (Boston Red Sox affiliate) at [Fluor Field](#) or the [Greenville Swamp Rabbits](#) hockey team at the [Bon Secours Wellness Arena](#). [Clemson University](#) and several local colleges round out the collegiate sports scene.



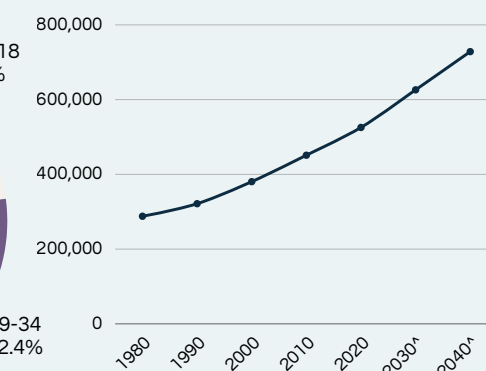
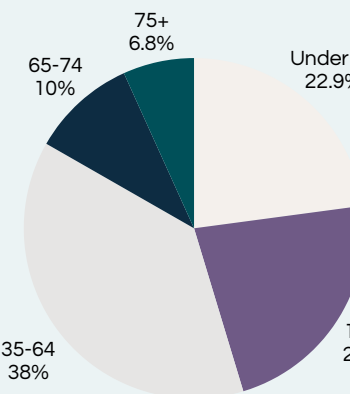
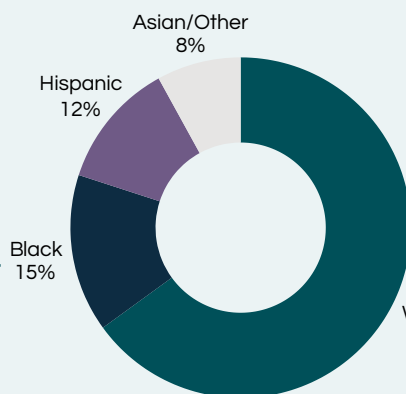
GROWTH & MINISTRY OPPORTUNITY

Greenville is one of the fastest-growing cities in the Southeast, drawing new residents from across the country with its thriving economy, affordable living, and exceptional quality of life. For Earle Street Baptist Church, situated on the edge of downtown in a neighborhood that reflects the full spectrum of Greenville's community, this growth is an invitation. The mix of longtime residents and newcomers, of prosperity and need, calls the church to engage its neighbors with intentionality — through outreach, service, and the kind of authentic community that a growing city is hungry for.

CITY OF GREENVILLE
Total Population 72,935



CITY OF GREENVILLE
Total Population 548,166



*City future projections through 2035 sourced from Aterio models; for 2040 sourced from GVL 2040 comprehensive plan

^ County future projections sourced from SC Revenue and Fiscal Affairs Office

NEXT PASTOR



As part of our pastor search preparation, we gathered as a church family to clarify the qualities we hope to find in our next pastor. From the outset, we agreed on something important: we are not simply "looking for" a pastor — we are eagerly awaiting the one God is already preparing for us.

With that conviction as our foundation, our priorities reflect our mission:

We are looking forward to a pastor who will nourish our spiritual growth through preaching, Bible study, and personal example — a priority that rose to the top in conversations across every age group.

We are looking forward to a pastor who will help us establish a vision for the next decade. Our church has always been built on vision, returning to it deliberately as each chapter closes and a new one begins. As we step into our second century, we are ready to look forward again.



We are looking forward to a pastor who will join us in supporting our local and global mission partners — with our time, energy, and financial gifts — and who will help us become a more outward-focused, relationally engaged church.

We are looking forward to a pastor who loves people, loves us, and is committed to building relationships both inside and outside these walls.

MINISTRY PRIORITIES

-  **1** NURTURING SPIRITUAL GROWTH OF CHURCH MEMBERS
-  **2** WORKING WITH DEACONS/LAY LEADERSHIP TO ESTABLISH A VISION FOR THE CHURCH
-  **3** ACTIVE SUPPORT OF LOCAL MISSIONS
-  **4** EMPOWERING MINISTERIAL STAFF
-  **5** ENCOURAGING LAY LEADERSHIP WITHIN THE CONGREGATION

SERMON PRIORITIES

-  **1** **RELEVANT**
Relatable and applicable to people of all ages
-  **2** **BIBLICALLY FOCUSED**
Rooted in Scripture
-  **3** **CHALLENGING / ENGAGING**
Calls listeners to think deeply, examine their hearts, and take action.
-  **4** **SKILLED DELIVERY**
Focused and well-composed message within time limits

NEXT PASTOR



LEADERSHIP QUALITIES

Strong Force in Decision Making

Emphasizes Lay Leadership in Decision Making



Formal

Relaxed and Casual



Follows Precedent

Seeks Innovation



Challenging

Comforting



Independent

Collaborative



Manager

Creative



Teacher

Evangelist





Amy Moore, Co-Chair

Amy and her husband Stuart met at Wake Forest University School of Divinity and married after she graduated in 2008. They moved to the upstate in the fall of 2013 and joined Earle Street the following summer. In 2017, their son Cam was born. Amy enjoys working from home for Together Women Rise, a nonprofit working towards global gender equality. Around Earle Street you can find her co-leading the Daily Bread Sunday school class, rocking babies in the nursery, and singing in the choir.



Wayne Turner, Co Chair

Wayne Turner grew up in Marion Co., SC. He attended North Greenville (AA), Campbell (BA) and SBTS (MDiv, DMin). Wayne and Kathy have two children, Jennifer & Wilson. Wayne served as pastor at 3 churches in Indiana and one in Illinois. The last 12 years of working, he was a board-certified hospice chaplain in southern Indiana. Wayne sings in the choir, chairs the Senior Adult Ministry Council, co-chairs the Connections Team and the Discernment Team, is our Canterbury liaison, helps with VBS and is a Paraclete Team member.



Margo Love

Margo Love was enrolled in the cradle roll at ESBC seventy years ago, but left when her family moved eight years later. In 1991, she and her husband, John, moved back into the Earle Street community and “returned home” to raise their children, Andrew and Ren, at ESBC. After living a block from the church for 30 years, Margo and John now live in Travelers Rest. She is a retired information technology project manager, consultant, and adult educator, who enjoys spending time with the grandbaby, beginner violin (her retirement challenge) and serving in various capacities at ESBC.

Pastor Sarah
COMMITTEE



Denise Plumblee

Denise and her husband, Phil, have been members of ESBC since 2014. She served on the staff of Earle Street from 2010 to 2023 in the area of administration. Denise currently serves as the church administrator for Pelham Road Baptist Church. She serves as an usher and on the Outreach Team. Denise and Phil have two sons, two daughters-in-love and 7 (the perfect number!) grandchildren. She enjoys all things Disney, listening to audiobooks/podcasts, and spending time with the grands.



Steven Rau

Steven Rau is a member of Daily Bread Sunday school class and sings in the Earle Street Baptist Church choir. He has been attending ESBC since 2014 with his wife Julie, son Josiah, and daughter Chloe. He is a certified public accountant with Acuity Taxes & Consulting. Steven has a degree in Religious Studies from Lawrence University and a Master's of Professional Accountancy from Clemson University. His favorite Bible verse is Matthew 13:33: "He told them another parable: 'The kingdom of heaven is like yeast that a woman took and mixed in with three measures of flour until all of it was leavened.'"



Grey Register

Grey and his wife Rebecca joined Earle Street in 2017. They have 2 young children, Luke and Jack. He works in data science and analytics. Grey is a deacon, a co-leader of the Daily Bread Sunday School class and serves on the Mission Vision Council as well as the liaison to United Ministries & GOAL Justice in the missions cluster.



Meredith Smith

Meredith and her husband, Bill, have been attending Earle Street since 2006. She teaches high school, and they have two children in high school. She sings in the choir and is one of the teachers for the Daily Bread Sunday school class. Meredith has previously served as a deacon and as a member of the nominating committee. She is currently the Sunday school coordinator and enjoys volunteering in the nursery and with vacation Bible school.



EARLE STREET
BAPTIST CHURCH

Contact Us

Earle Street Baptist Church
225 W Earle Street
Greenville, South Carolina 29609

864-233-5332
www.esbcgreenville.org
info@esbcgreenville.org
[@esbcgreenville](https://www.instagram.com/esbcgreenville)